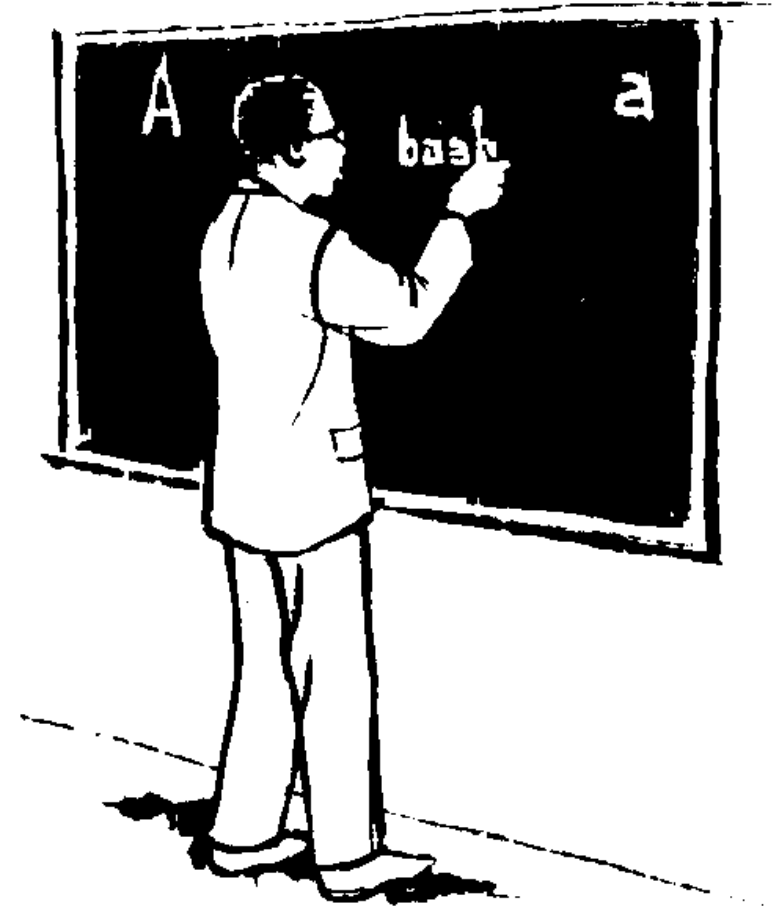


Khwiyike Olutachoni



Tachoni

Primer

Amarebo:

1. Nying'inya amera ka chisang'i chinga chili mulukano luno?
 - a.
 - b.
 - c.

2. Wanakhamuna khakhola sina?
.....

3. Wina nende wina bakhwesana
.....

4. Wanakhamuna khenya fundu sina okhurula khu yinjofu nende ku yifubu?
.....

5. Olukano luno lukhwechesia luri sina?
.....

khwesa omukoye lisimama. Omusala kuno kwali akari wa yinjofu nende yifubu, khacha khakusisikha. Okhulwana khwarachikha, kakhayikhana okhusumulana! Likhu lino liachililila khulwa chisa chirano hasi hanyira nabuchwa seli yinjofu naho yifubu yasamula owasie tawe.

Ne, sikila nakhamuna khenya chinyeni likhumi okhurula khu yifubu, nende amaondo okhurula khu yinjofu, khamala khanyola emiandu kino kiosi. Olukano lwanje lwawela abwenaho.

Letia Wasilwa L. Se – Wekesa

Khwiyike Olutachoni

Title: Khwiyike Olutachoni

Language: Tachoni

Authors: Ngosia Samson & Tobias Walubengo



Tachoni Language & Literacy Project

Box 44456 -00100 Nairobi

E-mail address: tachoni@btlkenya.org

Trial Edition

2017

ISBN: 978-9966-00-344-7

Published by

Bible Translation & Literacy (E.A.)

P. O Box 44456-00100 Nairobi

©BTL, 2017

ga khari khalarera omukoye biboane mani
bikhwesane kho bilole ni wina huli nende amani
amakali. Yinjofu yeyama sikila yali yimanyile yiri yi-
bele nende amani amakali. Yasunga yiri Nakhamuna
kharere omukoye kulia yinyinga ya okhukhwesana.

Nakhamuna kharula khacha okhulakaya nende
yifubu. Khayinyola yilakelakelanga khumachi, khais-
ungila khari ewe ololekha buchwa okubili, esie nibebe
nende amani okhukhubira. Enga yinjofu, yifubu yosi
yachekha yasunga yiri “sekanyalikha nakhamuna
ewe wukhile amani tawe.” Nakhamuna Khasunga
khari khalarera omukoye bikhwesane kho bimanye ni
wina huli nende amani amakali.

Yinyinga ya okhukhwesana yatukha, khacha khaboa
yinjofu omukoye khandi khacha khaboa yifubu. Kha-
mala nekhasungila buli okusang’i khari
lwakhasisikha omusala omurambi ne likhu lia okhu-

OBUCHESI BWA NAKHAMUNA

Yaliho khaale, nakhamuna khali ni khamenya musiswa. Hakari wakho chisang'i chindi chibili chali chamenya mumuchuru. Yindala yali yinjofu ne yindi yali yifubu.

Nakhamuna khereba khari 'ekhola sindu sina nanyola emiandu?' Yinganakani yanyolekha, khasunga khari emisang'i kibili kino kibebe nende amani kokhuukia! Lekha enje endole buli kulala enguchekenjie endi esie nibebe nende amani okhukubira. Khanyoha khalola yinjofu khandi khalola yifubu. Khasunjila yinjofu khari 'ewe ololeka okubili busa, esie nibebe nende amani okhubira ewe.' Yinjofu yachekha yakhasunjila yiri 'ewe watutua ata sololekha obulahi tawe onyala khuba nende amani okhubira esie oriena?' khasun-

UTANGULIZI

Kitabu hiki kinalenga kuwasaidia watu wanaojua kusoma na kuandika katika lugha zingine, ili waweze kusoma na kuandika lugha ya Kitachoni bila tatizo.

Esiambeli

Etoa ya Olupapuulo luno ni okhukhonya abandu bamanya okhusoma nende okhunying'inya chindimi chindi, kho bamanye okhusoma nende okhunying'inya olutachini halali obusiro bwosi bwosi

Lisomo lia hambeli : Enyukuta Bb

Lirumikha lia Bb

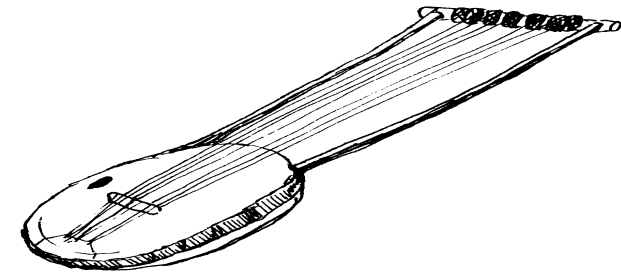
Olulimi lwefu lubele nende enyukuta **B**. Halali enyukuta yino seyilangangwa khuli **B** ya Olusungu nende Oluswahili ta. Olutachoni lurumikhilanga khuli omusungu arumikhilanga **V**

Ba, Be, Bi, Bo, Bu,

Amakhuwa kali nende enyukuta B

Baya.	Yingabo
Abene	Amareebo
Owabo	Amabeele
Beka	Olubaa
Abana	Obuyenje
Ababe	Abakeni
Bukula	Abakhana
Yibacha	Abundu

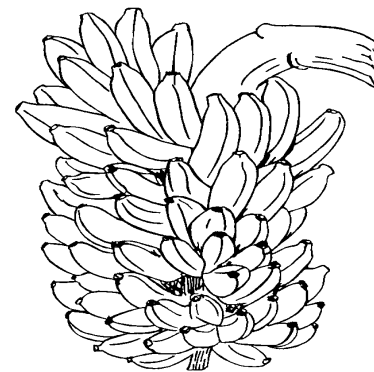
Litungu.



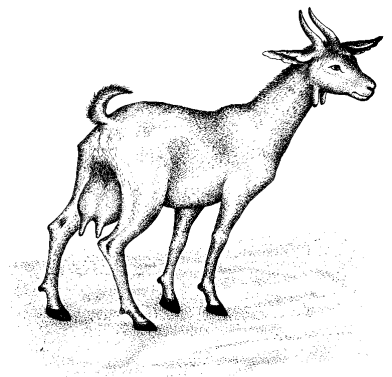
Lino litungu nilio. Abandu bembanga babayanga litungu okhwinosia chinyimbo chaabo. Omundu mulala anyala okhubaya litungu na hundi naye yemba olwimbo.

Amarebo:

1. Litungu likholanga sina?



Lino ni?



Khulanganga esiayo sino khuri sina?

Lisomo lia Musafu: Enyukuta L

Lirumikha lia enyukuta L

Amakhuwa kali nende enyukuta L

La, Le, Li, Lo, Lu

Lihembe	Lisafu
Lita	Likina
Likanya	Lengela
Litala	Chelela
Liloba	Chomola,
Welola	Yombola
La kasia	Robola
LambuulaLia	Kalukhasia

Abandu



Abano abandu nibo. Nali mulala khulanganga khuri Omundu. Abandu bano baamo ba Esikhasi nende ba Esisacha. Abndu bano babeele nende obusaangafu obukali

Amareebo:

1. Omundu ni mulala, abakali khulanganga Khuri?
.....
1. Khubele nende abandu ba esisacha nende?
.....
1. Wina huli nende obusaangafu?
.....
1. Nying'inya amakhuwa kali nende enyukuta ya B
Ya Ka..... Ra.....
Ta kha na
Sa A Ro

Lisomo lia khabili H h
Lirumikha lia H h

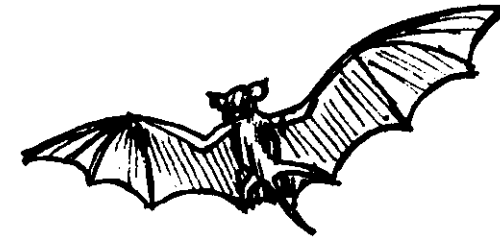
Olulimi lwefu lurumikhilanga enyukuta H. Olukali
 Omutachoni nalakaya enyukuta yino seyihulikhanga
 obulahi ta. Likhuwa nga *hena* olukali lihulikhanga nga *ena*

Ha, He, Hi, Ho, Hu,

Amakhuwa kali nende enyukuta H h

Hango	Lihonga
Ahambi	Oluhungu
Lihakilo	Oluheni
Hena	Oluhucho
Lihondo	Lihela
Lihima	Ehuma
Lihalamba	Yihunja

Wambuto



Yino wambuto niyo. Wambuto yipurukhanga esilo na
 musteere yisungwacha khumusala sikila ofulenje fwayo
 fubula amani ka okhusingila. Ne esang’i yonyene yili nende
 obunyali bwa okhupurukha nga linoni

Amarebo:

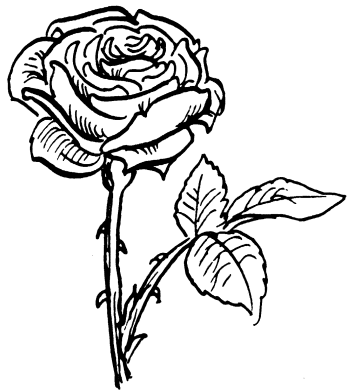
1. Sina sikila wambuto ne yisungwachanga?

2. Wambuto yibele nende bunyali sina?

3. Nying’inya makhuwa kali nende enyukuta W

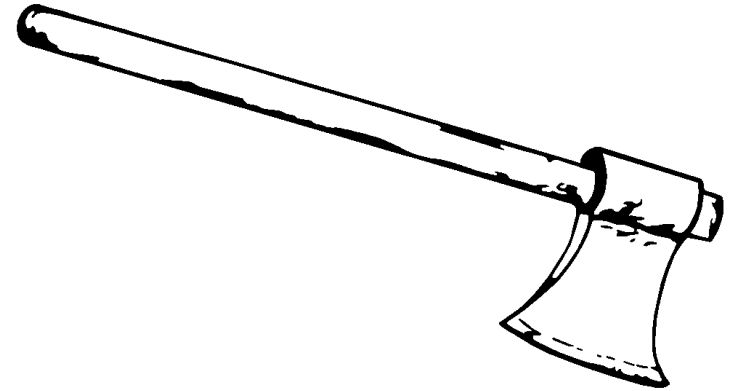
Lisomo lia Sasaba: Enyukuta Ww
 Lirumikha lia Ww
 Wa, We, Wi, Wo, Wu
 Amakhuwa kali nende enyukuta Ww

Wakamanya	Ekewa
Waya	Lihuwa
Wele	Likhuwa
Wenyene	Nawe
Ewabo	Obuwanga
Ewe	Wane



Lihuwa

Ehaywa



Eyino ni ehaywa. Yirumikhanga okhurema emisaala nende okhwasisaka chikhwi. Yibeele nende omuhini kwa okhutila ne wasiaka naho ne orema.

Amarebo:

1. Ehaywa yikholanga sina?

.....

2. Otilanga sina ne olaremanga naho ne wasiaka

.....

3. Nying'inya amakhuwa kali nende enyukuta ya H

Ha	Fu	ra
ta	Bo	tu
He	Be	Ka

Lisomo lia khataru: Enyukuta Kh

Lirumikha lia Kh

Kha, Khe Khi, Kho, Khu

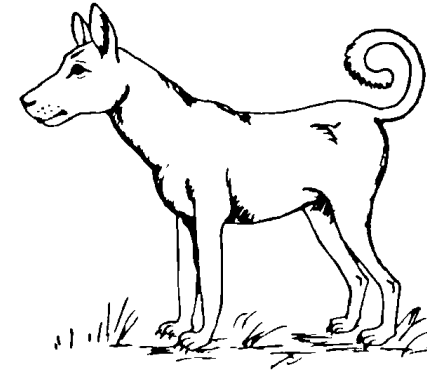
Esikhandakilo.



Amakhuwa kali nende enyukuta Kh.

Likhanga	Khula
Abakhana	Khane
Likokhe	Khwasia
Omukhasi	Kholola
Khalabana	Khunyula
Kulikha	Khokorola
Khakaba	
Khuusia	

Yimbwa



Yino yimbwa niyo. Ne chili chingali khulanganga khuri chimbwa. Chimbwa chimenyanga nende abandu mungo mwabo. Chiyetanga okhulinda hango kho abasiku bakhenjila hango ta. Chimbwa khandi chirumikhanga okhuhaya chisang'I chindi nga ofutuyu nende chikhisi

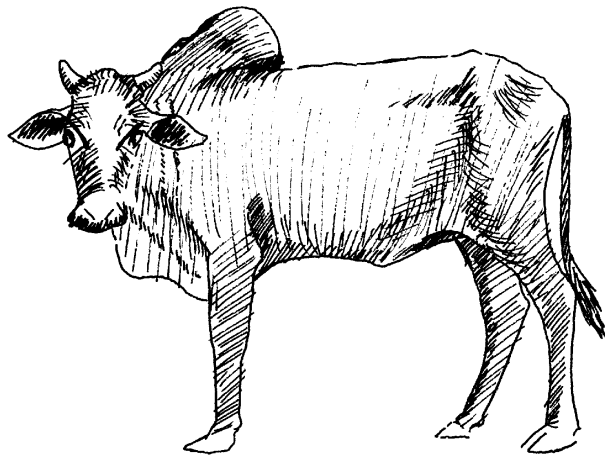
Amarebo:

1. Yimbwa yimenyanga hena?
.....
2. Yimbwa yirumikhanga okhukhola sina?
.....
3. Amakhuwa kali nende enyukuta Y
.....

Lisomo lia kharano: Enyukuta Yy

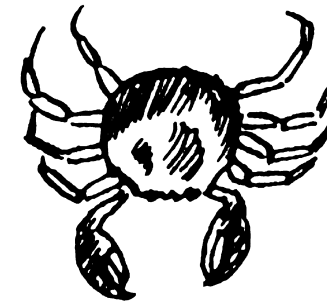
Amakhuwa kali nende enyukuta Yy
Ya, Ye, Yi, Yo, Yu.

Yaba	Yungubala
Baya	Kaya
Yayana	Amakuyila
Yeta	Amayilwe
Yasama	
Yibacha	



Eheyi

Likhala



Lino ne likhala. Ne kali amakali khulanganga khuri Amakhala. Kaho kamenyanga khulukongo ne akandi kamenyanga mumachi. Amakhala koosi kalulanilanga mumachi

Amarebo:

1. Amakhala kamenyanga hena?

.....
.....

2. Amakhala kalulanilanga hena?

.....
.....

3. Nying'inya amakhawa kali nende enyukuta kha

.....
.....

Lisomo lia khane: Enyukuta Ny

Lirumikha lia N y

Nya, Nye, Nyi, Nyo, Nyu

Amakhuwa kali nende enyukuta Ny

Yi - nye-nde	Yi- nya - nga
Obu - nya - si	Yi - nya - ma
Chi - nyi - mba	Yi - nya - nja

Nying'inya amakhuwa kali nende enyukuta Ny

Li	Ro	ma
Yi	Te	Eli
Omu	Mo	re
Nya	Hu	Ka
Ha	che	Su
Kho	Fu	Nyo

Chipicha chino chino chibeele nende chinyukuta chifwanana. Khulanganga khuriena ebindu bili muchipicha chino?

